



**REGIONAL SPECIALISED METEOROLOGICAL CENTRE-TROPICAL CYCLONES, NEW DELHI
TROPICAL WEATHER OUTLOOK**

DEMS-RSMC TROPICAL CYCLONES NEW DELHI DATED 04.09.2024

TROPICAL WEATHER OUTLOOK FOR NORTH INDIAN OCEAN (THE BAY OF BENGAL AND THE ARABIAN SEA) VALID FOR NEXT 168 HOURS ISSUED AT 0700 UTC OF 04.09.2024 BASED ON 0300 UTC OF 04.09.2024.

BAY OF BENGAL:

YESTERDAY'S LOW PRESSURE AREA OVER WEST VIDARBHA & NEIGHBOURHOOD LAY OVER SOUTHEAST RAJASTHAN AND ADJOINING SOUTHWEST MADHYA PRADESH AND BECAME LESS MARKED AT 0300 UTC OF TODAY, THE 4TH SEPTEMBER, 2024.

A CYCLONIC CIRCULATION LAY OVER COASTAL ANDHRA PRADESH & YANAM AND NEIGHBOURHOOD BETWEEN 3.1 AND 7.6 KM ABOVE MEAN SEA LEVEL TILTING SOUTHWARDS WITH HEIGHT AT 0300 UTC OF TODAY, THE 4TH SEPTEMBER, 2024. UNDER THE INFLUENCE OF THIS CYCLONIC CIRCUALTION, A LOW PRESSURE AREA IS LIKELY TO FORM OVER WESTCENTRAL AND ADJOINING NORTHWEST BAY OF BENGAL AROUND 5TH SEPTEMBER, 2024. IT IS LIKELY TO MOVE GRADUALLY NORTH-NORTHWESTWARDS DURING SUBSEQUENT 2 DAYS.

A CYCLONIC CIRCULATION LAY OVER NORTH ANDAMAN SEA & NEIGHBOURHOOD AT 0300 UTC OF TODAY, THE 4TH SEPTEMBER, 2024.

SCATTERED LOW AND MEDIUM CLOUDS WITH EMBEDDED INTENSE TO VERY INTENSE CONVECTION LAY OVER CENTRAL & ADJOINING SOUTHWEST BAY OF BENGAL, ANDAMAN SEA, ARAKAN COAST & GULF OF MARTABAN. SCATTERED LOW AND MEDIUM CLOUDS WITH EMBEDDED MODERATE TO INTENSE CONVECTION LAY OVER NORTHEAST BAY OF BENGAL, REST OF SOUTH BAY OF BENGAL AND WEAK TO MODERATE CONVECTION LAY OVER NORTHWEST BAY OF BENGAL.

***PROBABILITY OF CYCLOGENESIS (FORMATION OF DEPRESSION) DURING NEXT 168 HRS:**

24 HOURS	24-48 HOURS	48-72 HOURS	72-96 HOURS	96-120 HOURS	120-144 HOURS	144-168 HOURS
NIL	NIL	NIL	NIL	NIL	NIL	NIL

***NOTE: EVERY 24HR FORECAST IS VALID UPTO 0300 UTC (0830 IST) OF NEXT DAY**

Cloud distribution: (a) Isolated: <25%, Scattered:25-50%, Broken: 51-75%, Solid:>75%, Convection Intensity: (a) Weak: Cloud Top Temperature (CTT) >-25°C, (b) Moderate: CTT: - 25°C to -40°C, (c) Intense: CTT: - 41°C to -70°C and (d) Very Intense: : Less than -70°C
PROBABILITY OF CYCLOGENESIS (FORMATION OF DEPRESSION):NIL: 0%, LOW: 1-33%, , MODERATE: 34-66% AND HIGH: 67-100%
This is a guidance Bulletin for WMO/ESCAP Panel Member countries. Visit respective National websites for Country specific Bulletins

ARABIAN SEA:

YESTERDAY'S LOW PRESSURE AREA OVER WESTCENTRAL & ADJOINING NORTHWEST ARABIAN SEA BECAME LESS MARKED OVER THE SAME REGION AT 0300 UTC OF TODAY, THE 4TH SEPTEMBER, 2024.

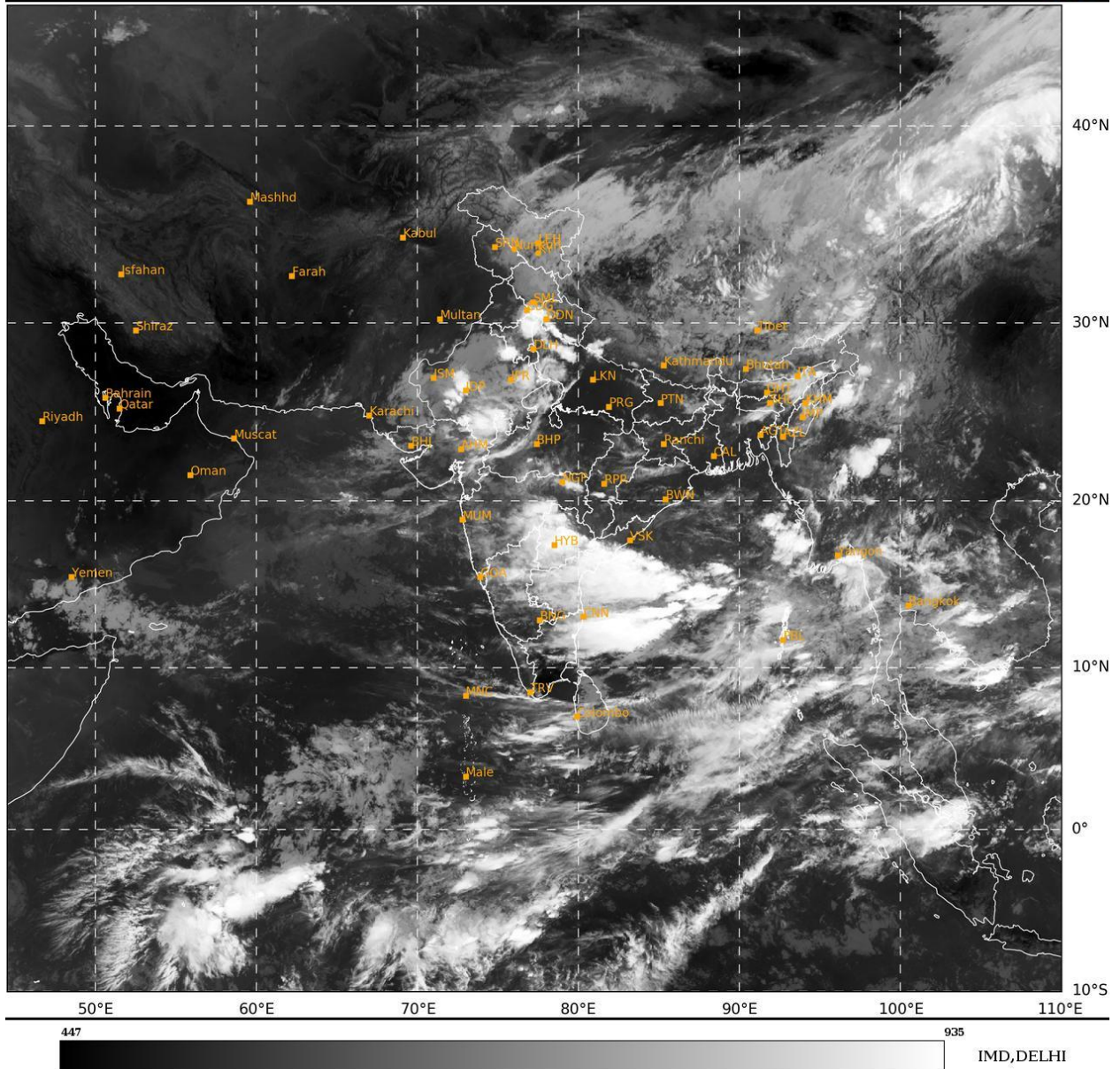
SCATTERED LOW AND MEDIUM CLOUDS WITH EMBEDDED MODERATE TO INTENSE CONVECTION LAY OVER MALDIVES & COMORIN AREA. SCATTERED LOW AND MEDIUM CLOUDS WITH EMBEDDED ISOLATED WEAK TO MODERATE CONVECTION LAY OVER ARABIAN SEA, GULF OF KUTCH, GULF OF CAMBAY AND LAKSHADWEEP ISLANDS AREA.

***PROBABILITY OF CYCLOGENESIS (FORMATION OF DEPRESSION) DURING NEXT 168 HRS:**

24 HOURS	24-48 HOURS	48-72 HOURS	72-96 HOURS	96-120 HOURS	120-144 HOURS	144-168 HOURS
NIL	NIL	NIL	NIL	NIL	NIL	NIL

***NOTE: EVERY 24HR FORECAST IS VALID UPTO 0300 UTC (0830 IST) OF NEXT DAY**

REMARKS: NIL



Cloud distribution: (a) Isolated: <25%, Scattered:25-50%, Broken: 51-75%, Solid:>75%, Convection Intensity: (a) Weak: Cloud Top Temperature (CTT) >-25°C, (b) Moderate: CTT: - 25°C to -40°C, (c) Intense: CTT: - 41°C to -70°C and (d) Very Intense: : Less than -70°C
PROBABILITY OF CYCLOGENESIS (FORMATION OF DEPRESSION):NIL: 0%, LOW: 1-33%, , MODERATE: 34-66% AND HIGH: 67-100%
This is a guidance Bulletin for WMO/ESCAP Panel Member countries. Visit respective National websites for Country specific Bulletins